

In This Issue:

From the Desk of the President	1
Sponsor Recognition, RP Goals.....	2
Greetings from Sarasota	2
ASHRAE FWC – 2018/2019 Committee Chairs	3
September Dinner Meeting	4
Golf Tournament Save-the Date	5
Sarasota Fishing Tournament.....	6
CRC Recap.....	7
GAC – BCxP Certification	8
Membership Promotion.....	9-12
ASHRAE bEQ Certification	13-15
Research Promotion.....	16-17
Electronic Communications	18
Sponsorships	19-21

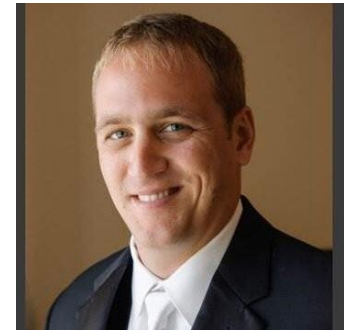
Upcoming 2019/2020 Events:

- September 17th, 2019 – Dinner Meeting
- October 5th, 2019 – Sarasota Fishing Trip
- October 15th, 2019 – Dinner Meeting
- November 8th, 2019 – Clay Shoot
- December 10th, 2019 – Holiday Party
- January 21st, 2020 – Dinner Meeting
- February 13th, 2020 – Tampa Bay Lightning Hockey Game and Tour
- February 18th, 2020 – Dinner Meeting
- March 6th, 2020 – Golf Tournament
- March 17th, 2020 – Dinner Meeting
- April 3rd, 2020 – Shrimp Boil
- May 19th, 2020 – Past President’s Night

Chris Janke
 cjanke@adehvac.com
<http://www.ashrae-fwc.org/>

From the Desk of the President

Tom Morgenthau



Welcome back FWC and I hope everyone had an excellent summer!

The board of governors has been working through the summer setting up our goals and events for the chapter this year. Please mark your calendars with the event dates provided in this newsletter. They are also available online at our website, www.ashrae-fwc.org.

Our first dinner meeting is scheduled next week on Tuesday, September 17th at Brio Tuscan Grille. Our speaker will be our very own FWC member, Dominic Cacolici, PE, with a discussion on condensation prevention on exterior chilled water piping. Professional Development Hours will be provided to our engineers.

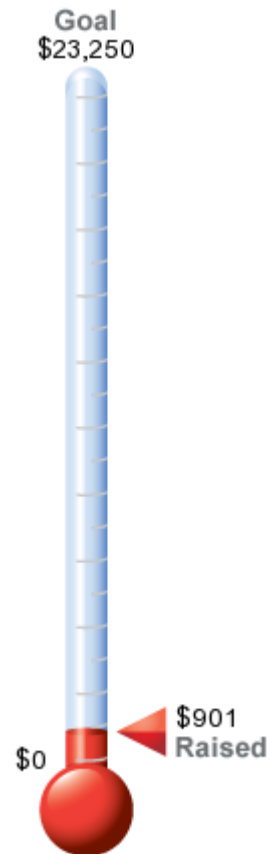
The annual clay shoot has been set for Friday, November 8th. There are sponsorship opportunities available for this event and you can contact me or any of the board members for further details.

Thank you for your continued support of the Florida West Coast Chapter. We are looking forward to a great year! See you next week!

Tom Morgenthau, PE
 President
t.morgenthau@emeraldme.com

A Special Thank You to our ASHRAE Research Investors!

Individual Sponsors	
Daniel R. Rogers, PE	\$500
Donald C. Herrman	\$100
Coleen Smith	\$100
Teddy Hansen, Sr.	\$101
Tom Morgenthau, PE	\$100



Greetings from Sarasota

Submitted by Tony Moreland, Sarasota Chapter President 2019-2020

Greeting from Sarasota-Bradenton Section. We are excited to start the ASHRAE year off with our annual Fishing Tournament. It will be Saturday October 5th and is always a great event. Be on the lookout for our upcoming meetings which we will be announcing throughout the coming months. We have a lot of good things planned and look forward to a successful year.

ASHRAE FWC - 2019-2020 Committee Chairs

President – Tom Morgenthau, PE	t.morgenthau@emeraldme.com
President-Elect/Vice-President/CTT Chair – Tim Theriault	timothy.theriault@tlc-eng.com
Vice-President/Research Promotion – Ben Hair	bhair@hvac.me.com
Vice-President/Membership Promo – Tyler Owens, PE	towens@carrollair.com
Student Activities – Sarah Studt	sarah.studt@tlc-eng.com
Student Activities Co-Chair – Mike Costello, PE	m.costello@emeraldme.com
Government Affairs Committee (GAC) – Heather Tank, PE	heath014@yahoo.com
ECC/Webmaster/Homepage/Secretary – Courtney Araiza	courtney.araiza@accurex.com
Honors and Awards/Historian – Ethan Grabill	egrabill@commercial-products.net
Special Events Committee – Scott Allred	scott.allred@victaulic.com
Young Engineers in ASHRAE (YEA) – Kat Liegl	mliegl@onicon.com
Co-Young Engineers in ASHRAE (YEA) – Ashley Bence	abence@onicon.com
Treasurer/Chapter Newsletter Editor – Chris Janke	cjanke@adehvac.com
Chapter Co-Historian – Isaac Crimm, PE	m.costello@emeraldme.com
Chapter Co-Historian – Zach Loyacono	zachary.loyacono@tlc-eng.com
Publicity – Peter Montana	pmontana@hvacinsider.com
Co-Reception/Attendance – Alex Glazer	aglazer@sladerossinc.com
Co-Reception/Attendance – Christen Quintana, EI	c.quintana@emeraldme.com
Building Energy Quotient (bEQ) – Ross Montgomery, PE	rossmont@aol.com
Refrigeration – Daniel Vaughn, PE	daniel.vaughn@tlc-eng.com
Co-Women in ASHRAE/Sustainability – Jennifer Isenbeck, PE	jisenbeck@ut.edu
CO-Women in ASHRAE/Sustainability – Kelsey Huntzinger, EI	k.huntzinger@emeraldme.com
Sarasota-Bradenton Section President – Tony Moreland	tmoreland@trane.com
Senior Advisor – Dan Rogers, PE	danfctc@verizon.net



September Dinner Meeting Flyer

Calendar Year: 2019 - 2020

First Dinner Meeting

Condensation Prevention

Meeting Summary:

We welcome you back for our First Chapter Dinner Meeting of the 2019-2020 ASHRAE year. This will be a great opportunity to mingle with Florida West Coast Chapter friends and find out how everyone fared through our rainy summer. We are continuing our meeting location at the Brio Tuscan Grille at International Plaza Mall near the Tampa International Airport. We will still be on the second floor of the Brio Tuscan Grille and look forward to great food offerings from Brio and great fellowship with you. Our presenter for this First meeting of the year will be one of our very own Chapter Members, Dominic Cacolici, PE. His presentation will be on sizing insulation to prevent condensation on exterior chilled water piping. Please join us for an engaging and informative presentation. We look forward to seeing everyone at the Brio Tuscan Grille.

CEU's available

When?

Tuesday, September 17th, 2019

5-6 PM Cocktail Hour

6-8 PM Dinner Meeting

Cost?

\$35 for FWC Chapter members

\$40 for Non-FWC Chapter members

\$45 Week of event for all

RSVP

at

www.ashrae-fwc.org/ashrae-events/

For questions, contact:

Timothy Theriault

timothy.theriault@tlc-eng.com

813-281-8428

Where?

Brio Tuscan Grille

2223 North Westshore Blvd.

Tampa, FL 33607





-----SAVE THE DATE-----

MARCH 6, 2020

AT THE EAGLES GOLF COURSE

16101 Nine Eagles Drive Odessa, FL 33556

OCT
5



5TH ANNUAL ASHRAE ON THE BAY FISHING TOURNAMENT

HYATT Regency Sarasota

1000 Boulevard of the Arts
Sarasota, FL 34236

Saturday October 5th
Captained Boats Leave: 7:00 AM

Individual Entry: \$ 400.00

Boat: \$1,300.00

Join us for the 5th Annual ASHRAE on the Bay fishing tournament. Event will be held at the Hyatt Regency Sarasota on Saturday, October 5th. Boats depart at 7:00 AM and are due back by 12:00 PM. Lunch will be served.

Hope to see you for a Fishtastic day!

Please email to sign up:

ASHRAESARASOTA@GMAIL.COM

ANGLER 1: _____

ANGLER 2: _____

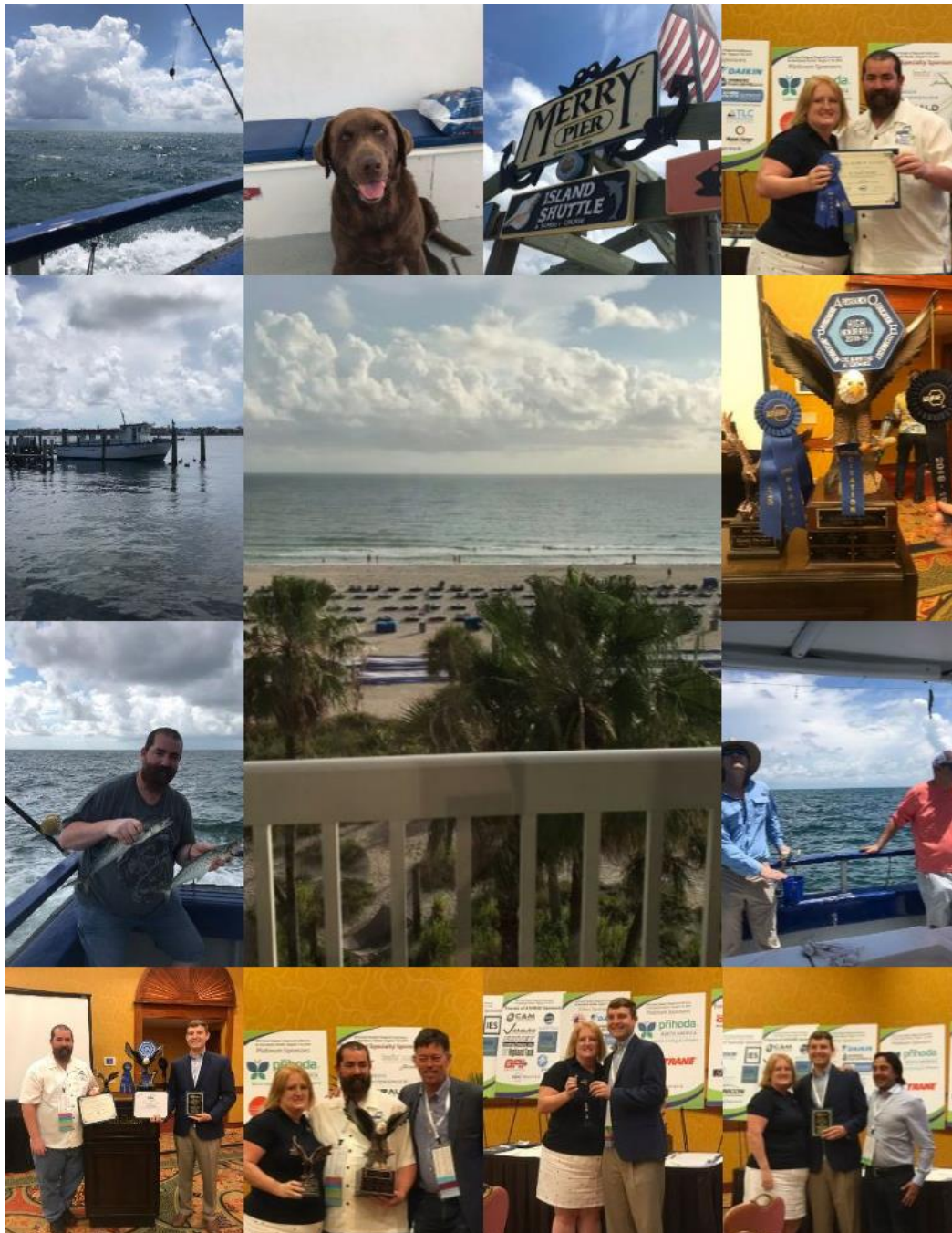
ANGLER 3: _____

ANGLER 4: _____

2019 Chapter Regional Conference Recap

Submitted by Christopher Janke, Chapter Newsletter Editor 2019-2020

This year, Regions VII and XII had the privilege of hosting the CRC event at the Tradewinds Resort in St. Petersburg Beach. Amidst the technical sessions and chapter reviews, Florida West Coast stood out among all of region XII for our MP and GAC contributions. Please make sure to congratulate Tim Theriault and Tyler Owens for all of their hard work and making our chapter proud!



Pictures submitted by Tim Theriault

Government Advocacy Committee

Submitted by Heather Tank, PE, FWC GAC Co-Chair 2018-2019

As we advance the awareness of ASHRAE to all, we urge everyone to take advantage of the benefits that the ASHRAE society has to offer. There are Certifications available to benefit your credentials. Highlighted in this issue is the ASHRAE BCxP. From ASHRAE.org:

BCxP – Building Commissioning Professional Certification



ASHRAE has certified more than 2,500 professionals who have demonstrated their knowledge and expertise in the HVAC&R industry. Gain a competitive edge by earning an ASHRAE certification in building commissioning. The BCxP certification, an ANSI-Accredited Personnel Certification Program under ISO/IEC 17024 (#1139), validates competency to do the following:

Lead, plan, coordinate and manage a commissioning team to implement commissioning processes in new and existing buildings.

The BCxP certification has been recognized by the U.S. Department of Energy (DOE) as meeting the Better Buildings Workforce Guidelines (BBWG).

- ASHRAE's BCxP certification program validates competency against scheme requirements for the Building Commissioning Professional set forth in the Better Buildings Workforce Guidelines.
- Elevate your reputation among peers, in the workplace and among clients.
- Demonstrate competency in critical building commissioning knowledge, skills and abilities.

Visit ASHRAE's Society page for additional information and to apply for your BCxP:

<https://www.ashrae.org/education-certification/certification/bcxp-building-commissioning-professional-certification>

Membership Promotion

Submitted by Tyler Owens, FWC MP Chair 2019-2020

As a fellow member of the engineering community here in the Florida West Coast area I am reaching out to invite you to learn more about ASHRAE and our local [chapter](#).

We are a successful and growing chapter of [ASHRAE](#), offering the local engineering community an opportunity to network, and take advantage of the many benefits of ASHRAE membership. ASHRAE is the largest international organization focused on shaping the built environment, with over 57,000 members in 132 countries.

We welcome you to attend any of our meetings or [events](#) at your convenience. If you would like to learn more about ASHRAE, our chapter, or membership in general, please let me know. I'd be happy to answer any questions, and look forward to welcoming you at our next chapter event. You may contact me at towens@carrollair.com, or 813-879-5790 x2230

New members receive one year complimentary subscription to the [ASHRAE Handbook Online](#) in addition to a print copy of the annual ASHRAE Handbook, and discounts on all [publications](#).

Continuing Education & Certification: As a member you will receive discounted registration on all ALI seminars and courses, which provide high-quality, authoritative, and credible technical information.

Get Involved Locally: Chapter and Regional events such as Chapter meetings, and Chapter Regional Conference's (CRCs) are a great way to meet others in your area and expand your network.

Participate on Technical or Standards Committees: The knowledge you will gain from volunteering with ASHRAE is priceless. Take a look at the committees and volunteer opportunities available to you, and learn how to participate.

Society Meetings and Conferences: Make time to attend at least one of ASHRAE's meetings or conferences this year, and network with other members from around the world.

ASHRAExChange: If you haven't done so yet, sign up to participate in the newest online discussion forum for questions, answers, and hot topics relating to the HVAC&R industry.

Membership Promotion

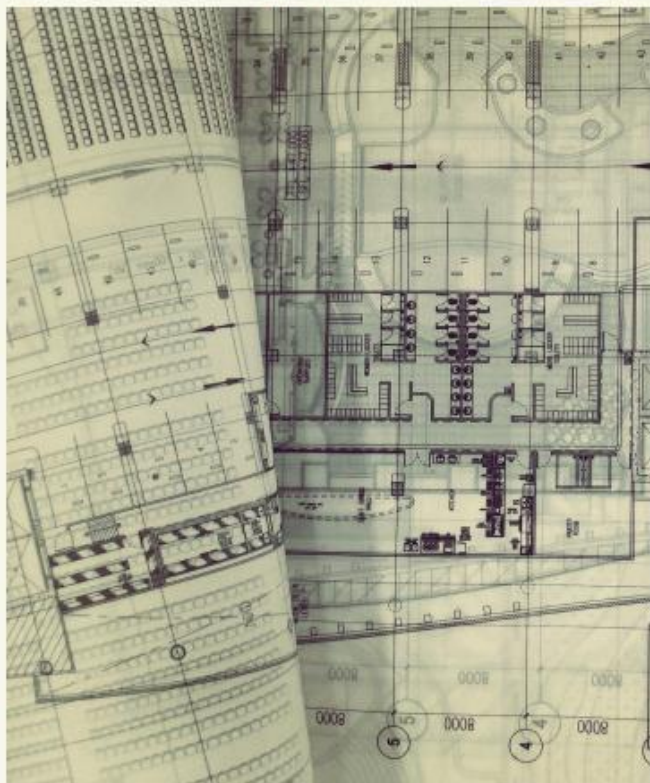
Submitted by Tyler Owens, FWC MP Chair 2019-20



CHAPTER MEMBERSHIP

We are a successful and growing chapter of ASHRAE, offering the local engineering community an opportunity to network, and take advantage of the many benefits of ASHRAE membership.

With your help, ASHRAE is the largest international organization focused on shaping the built environment, with over 57,000 members in 132 countries.



Membership Promotion

Submitted by Tyler Owens, FWC MP Chair 2019-2020

Are You An Associate Who Wants to Advance to Member?

To advance from Associate to Member, you must update your ASHRAE bio online with your industry experience, and notify membership@ashrae.org that you have an updated bio and wish to be considered for grade advancement.

Steps for updating your biography:

1. Log into www.ashrae.org by selecting 'Join or Login' in the upper right corner. Enter your email address and password then select 'Sign In.'
2. Select "My Account" in the upper right corner of the homepage.
3. Select the 'Biographical Information' tab along the top tab options. Add all of your educational history, relevant professional licenses and work history.

Why advance?

1. Prestige: While this should be of value to North American members (who wants to be an "Associate" when they can be a "Member"?), this is important to all of our Region's members. We happen to be one of the fastest growing regions and this helps keep our total membership above water!
2. Chapter recognition through newsletter: Gives recognition to advancing member, allows MP chair to educate chapter members on the benefits of advancement.
3. Chapter recognition at meeting: Same as 2 (above). Especially at designated MP Night chapter meetings.
4. To serve on a technical committee: Technical Committees are responsible for the vitally important ASHRAE Handbooks. Allows MP chair to publicly recognize chapter members who serve on TCs. Also allows MP chair to educate members on different facets of ASHRAE (Grassroots, TCs). And it encourages "TC" members to attend chapter meetings.
5. To serve in a chapter officer role: We believe that ASHRAE membership is vital to our individual careers and the leadership training available for very modest priced annual dues. To achieve the additional training (beyond committee chairs) available at the officer level, full grade membership is prerequisite.
6. To serve in a regional role: See #5 above. Additional leadership training is available at regional and Society levels.
7. To qualify for ASHRAE Fellow and other Society awards: The term "Fellow" is widely recognized in many technical, educational, and research societies and honors exceptional achievement and service. This and other society awards have Member Grade as a prerequisite.
8. You can add Member ASHRAE to your email tag: This simple addition to your email signature increases awareness of ASHRAE, provides free advertising, and adds prestige to the member and their company.
9. Allows our chapter to shine among other chapters: Regional recognition and contests offer chapter recognition and "bragging rights". Chapter presidents and regional officers should encourage this recognition.
10. Society recognition in Insights: All 57,000 plus members receive a copy of Insights.
11. Proves to your employer that you take your career seriously: You add value to your employer through continuing education, networking, and leadership training with an impressive return on investment. You differentiate from colleagues by maintaining membership and take the further step of advancing to full Member status.
12. Proves to your professional community that you take your career seriously: Savvy consumers of your products and services are increasingly using the internet and ratings services to differentiate among possible professional candidates. Advertising full member status proves that you have established a long term relationship with the most important society serving the HVACR industry.

Advancing is a great thing for you and your chapter. I hope you will consider doing that this year. If you are unsure about your eligibility of advancement or any other questions, drop a note to the MP chair at towens@carrollair.com or catch me at a dinner meeting or chapter event. If you have any projects that have obtained bEQ certifications in this chapter's area, please let FWC know for tracking purposes. Please email info to: rossmont@aol.com

Membership Promotion

Submitted by Tyler Owens, FWC MP Chair 2019-2020



We have YOU to thank!

We are thankful for your membership and your referrals continue to be the top reason new members join! In an effort to keep the momentum going, we invite you to Connect-a-Colleague with ASHRAE today.

[Connect-a-Colleague Now](#)

It takes less than one minute, and there is no need to login. Just enter your name & email address, and your colleague's name & email address, and press send. That's it!

As an ASHRAE member, your referral is a very powerful tool that can benefit your colleagues, your Society, and the HVAC&R industry. **THANK YOU** again for doing your part to help the Society grow.

[If your ASHRAE Membership expired or expires soon.](#)
[Click here to Renew Online](#)

— [Get To Know ASHRAE](#) —

For questions about Membership contact **Timothy Theriault** at timothy.theriault@tlc-eng.com



Building EQ

Be an Energy Genius

ASHRAE's Building EQ Portal provides a quick energy analysis that benchmarks a building's energy performance. Building EQ assists in the preparation of an ASHRAE Level 1 Energy Audit to identify means to improve a building's energy performance including low-cost, no-cost energy efficiency measures and an Indoor Environmental Quality survey with recorded measurements to provide additional information to assess a building's performance.

Two different evaluations can be used independently to compare a candidate building to other similar buildings in the same climate zone or together for an assessment of a building's design potential compared to actual operation:

In Operation compares actual building energy use with metered energy information.

As Designed compares energy use based on the building's physical characteristics and systems with standardized energy use simulation.

Building EQ Portal

The new Building EQ Portal is now available for the In Operation evaluation. The As Designed evaluation will be available soon.

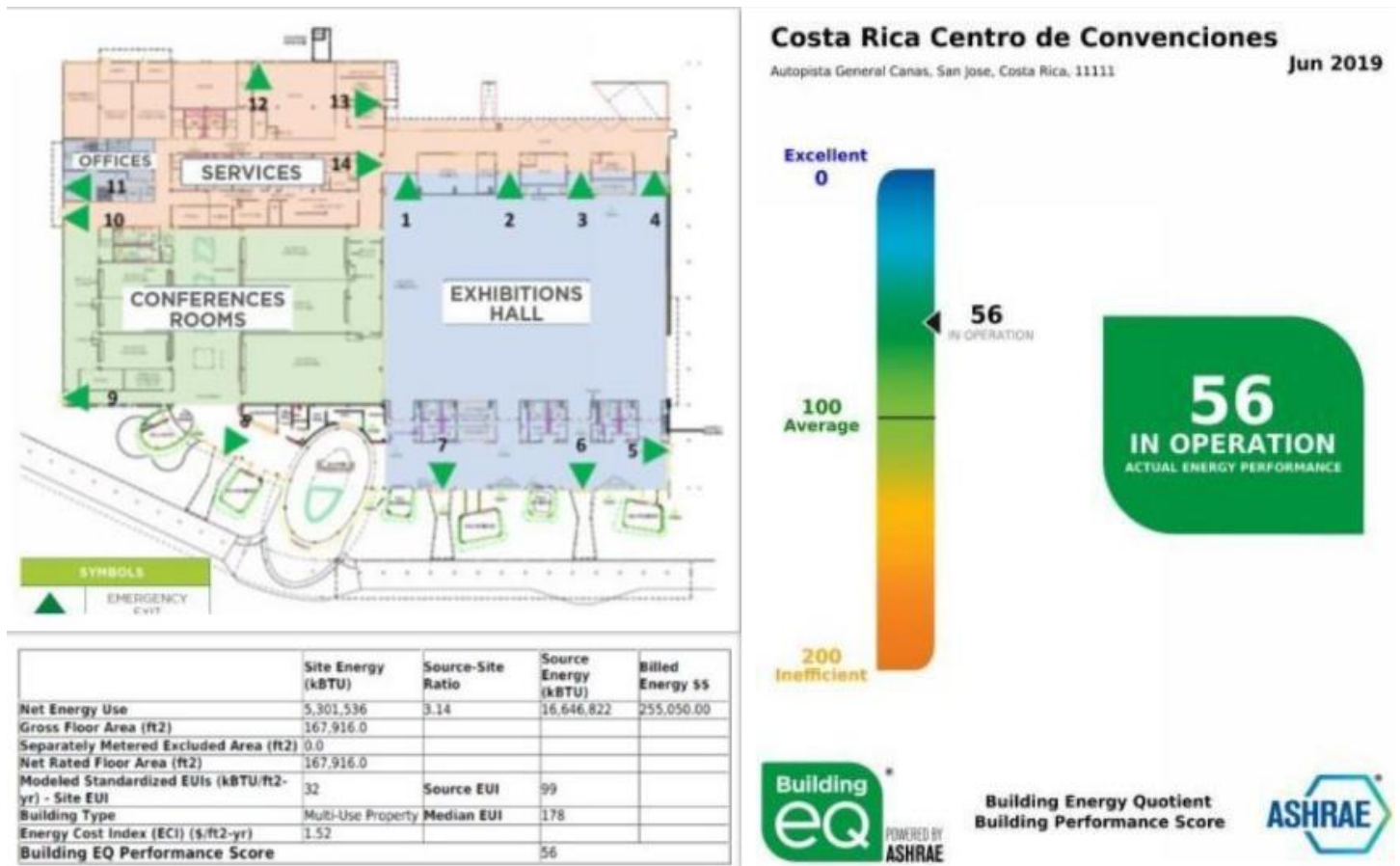
- Online data entry and submission process
- Metered energy data exchange from ENERGY STAR™ Portfolio Manager
- Median EUI calculation aligned with ENERGY STAR™
- Building EQ Performance Score visible to all users on the main input screen at all times
- Redesigned label shows Building EQ Performance Score on a barometer/scale. No more letter grades!
- Standard reports can be automatically generated by credentialed users
- Improved submission approval process
- Help and validation information is built into the system

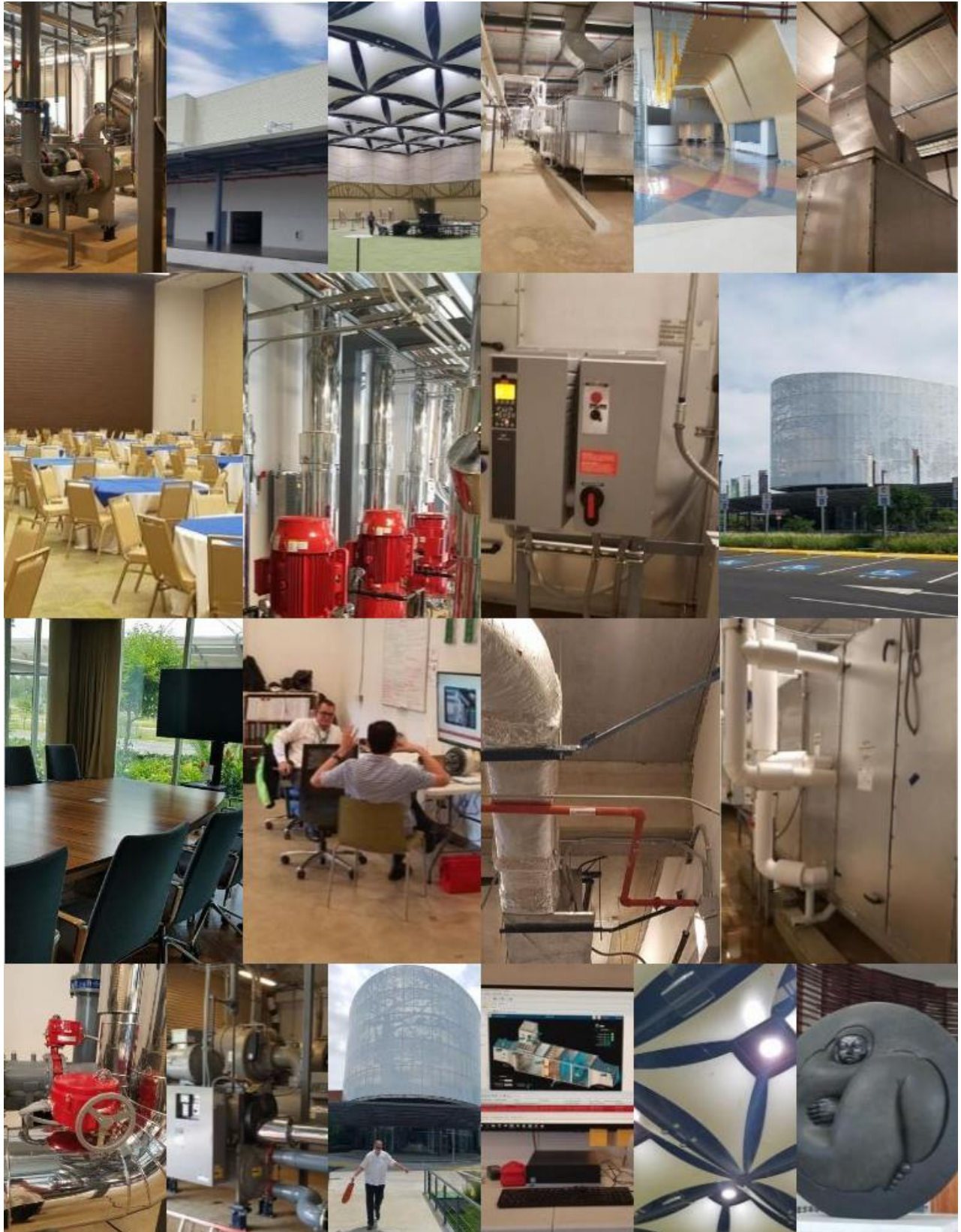
Learn more on how to access the portal, initiate a project, and begin a submission:

<https://www.ashrae.org/technical-resources/building-eq/building-eq-portal>

Building Energy Quotient (bEQ) Report Submitted by Ross Montgomery, PE, Fellow ASHRAE

Costa Rica’s San Jose Convention Center is an advanced architectural work, responsible for the environment, and inspired by the biodiversity and culture of Costa Rica. Built in 2017, it was designed to generate unique experiences for visitors within a sustainable, modern, and versatile space. The 10 hectare property has a constructed area of just under 168,000 square feet, and is equipped with some of the latest technology designed to make events a great experience. The convention center carries a bEQ score of 56, which is characterized as “very energy efficient”.





Pictures submitted by Ross Montgomery, PE

Research Promotion

Submitted by Ben Hair, FWC RP Chair 2019-2020

Since 1919, ASHRAE has supported research to improve the quality of life. ASHRAE Research impacts the industry by improving the way HVAC&R systems work, how they are applied, and allow development of technical information to create standards and guidelines, which serve as the basis for testing and design practices around the world.

The Society funds thousands of projects addressing topics such as sound, duct design, the effect of oil refrigerants, load calculations, thermal conductivity, simplified energy analysis procedures, weather data, refrigerant property data, fire and smoke control, and solar design. The most significant ASHRAE research is in the areas of human comfort and the properties of materials and systems used in buildings and refrigeration systems.

How does ASHRAE Research help my health?

ASHRAE Research is working in the health arena to help:

- Prevent more than 70,000 surgical site infections that occur each year
- Decrease the spread of airborne diseases
- Improving cancer treatment methods

How does ASHRAE Research help me in the workplace?

ASHRAE Research is learning more about how commercial buildings can:

- Conserve energy in hot and humid climates
- Select boilers for efficient heat use
- Allow drifting temperatures to save energy

How does ASHRAE Research help me in my home and my children at their school?

ASHRAE Research is:

- Exploring whether temperature and air quality improve the performance
- Understanding the relationship between occupant health and ventilation rates
- Evaluating how food preservation is influenced by storage conditions

Whether it's improving the work setting in an office building to increase productivity or providing guidelines for emerging technologies, ASHRAE Research helps engineer the world we live, creating better indoor and outdoor environments around the globe.

This would not be possible without the individuals and organizations that have chosen to support ASHRAE's vision with their financial contributions. To continue our progress, we need your support as well. To make a donation to ASHRAE Research, please click the link below:


[Contribute to ASHRAE Research Today](#)

*Please make sure you note "Florida West Coast Chapter" as your "Assigned ASHRAE."

Thank you for your time,
Benjamin Hair ASHRAE FWC RP Chair 2019-2020

Research Promotion (cont'd)

Submitted by Ben Hair, FWC RP Chair 2019-2020

ASHRAE Research Investors 2019-2020		
Individual Investors		Company Investors
HR = Honor Roll participants \$100 min		HR = Honor Roll participants \$250 min
Daniel R. Rogers, PE	\$500	
Donald C Herrman	\$100	
Colleen Smith	\$100	
Teddy Hansen, Sr	\$101	
Tom Morgenthau, PE	\$100	
	\$23,000 _____	
	\$22,000 _____	
	\$21,000 _____	
	\$20,000 _____	
	\$19,000 _____	
	\$18,000 _____	
	\$17,000 _____	
	\$16,000 _____	
	\$15,000 _____	
	\$14,000 _____	
	\$13,000 _____	
	\$12,000 _____	
	\$11,000 _____	
	\$10,000 _____	
	\$9,000 _____	
	\$8,000 _____	
	\$7,000 _____	
	\$6,000 _____	
	\$5,000 _____	
	\$4,000 _____	
	\$3,000 _____	
	\$2,000 _____	
	\$1,000 _____	
	\$0 _____	
	 <p style="text-align: center;">\$901</p>	
Updated 9/12/19		Florida West Coast Chapter \$0
Current Campaign Total - \$901.00 Campaign Goal - \$23,250		3.9% of Goal Money Required for Goal - \$22,349.00

Electronic Communications

Submitted by Courtney Araiza, FWC EC Chair



We NEED you to “like” our Facebook page

Go Here:

<https://www.facebook.com/ashraefloridawestcoast>

Tag yourself in the pictures.

Also, visit our chapter website here:

<http://www.ashrae-fwc.org/>

This Newsletter is sponsored by the following:



Quality Systems and Technology Inc.

Building Commissioning and Energy Audit Services

Ross D. Montgomery, CxA, P.E. ASHRAE Fellow
President

12325 Terracina Chase Ct. Tampa Fla. 33625
Ph; 941-737-1401 email; rossmont@aol.com



PE 36128 CMCO 25363 EC 0001126 GBE 206 CEM 4487 CxA 1111.921
ASHRAE Certified: BEAP, HBDP, CPMP



ADDITIONAL SPONSORSHIPS ARE AVAILABLE

Want your business card here and reach out to over 1000 people monthly? See the next two pages for pricing.

2018-2019 NEWSLETTER AND WEBSITE SPONSORSHIP PRICING PACKAGES

ASHRAE (formerly known as American Society of Heating, Refrigerating and Air Conditioning Engineers) is a building technology society with more than 50,000 members worldwide. The Society and its members focus on building systems, energy efficiency, indoor air quality, refrigeration and sustainability within the industry. Through research, standards writing, publishing and continuing education, ASHRAE shapes tomorrow's built environment today.

ASHRAE was founded in 1894 at a meeting of engineers in New York City and has held an annual meeting since 1895. Until 1954 it was known as the American Society of Heating and Ventilating Engineers (ASHVE); in that year it changed its name to the American Society of Heating and Air-Conditioning Engineers (ASHAE). Its current name and organization came from the 1959 merger of ASHAE and the American Society of Refrigerating Engineers (ASRE). The result, ASHRAE, despite having 'American' in its name, is an influential international organization. Amongst other international activities, it helps organize international events.

The society promotes the design and installation of HVAC systems at the highest levels, through publication of Data Books and Handbooks covering all relevant topics, legislative involvement, establishment and support of a research foundation, and standardization of design qualifications.

The Florida West Coast Chapter of ASHRAE was chartered in February 1956 to promote industry standards and best practices at the local level. The local chapter enjoys a strong meeting participation, and generates operating revenue through chapter activities like the annual golf tournament, sporting clay shoot, and specialized learning opportunities with visiting lecturers. A large portion of the proceeds from these activities goes to establish and maintain various local college scholarships, to promote further interest in the HVAC engineering profession following graduation.

Along with the aforementioned activities, our most valuable resource for generating operating capital remains sponsorships. Via its monthly newsletter and newly updated website, <http://www.ashrae-fwc.org>, the Florida West Coast Chapter of ASHRAE is a resource for its members, and can be an effective tool for promotion of your company, product, or service.

The newsletter is published multiple times per ASHRAE year (September through June of the following year), and is distributed via email ahead of the monthly chapter meetings. In each newsletter, the chapter officers contribute articles that focus on industry happenings, legislative changes, educational opportunities, and more. The current email recipient list is over 1,000 individuals. The chapter website is updated monthly, and includes information on upcoming events, event photographs, posts resumes and career opportunities, and contains useful links to industry resources. The website currently has over 40,000 individual IP computer hits since its launch in September 2013.

2018-2019 NEWSLETTER AND WEBSITE SPONSORSHIP PRICING PACKAGES

Please consider sponsoring the Florida West Coast Chapter of ASHRAE’s newsletter and/or website. Your business card will be published multiple times per ASHRAE year in the emailed newsletters, and can be updated at any time with a new copy if desired. Sponsorship on the website includes a business card on the sponsorship page and a link to your company website.

For the 2017-2018 year, the Chapter Board of Directors has decided upon the following rate as detailed below. In appreciation of the support from our sponsors during this difficult economic time, we want advertising in the chapter newsletter and website to remain affordable and accessible.

2017-2018 ASHRAE FWC Advertising Rates (All Rates are for the ASHRAE Year - September 2017 through June 2018)		
Ad Type and Size:	ASHRAE FWC Members Fee:	Non-Members Fee:
10 Monthly Newsletter Spots (Business Card Size) <i>Reaches over 1,000 people per month!</i>	\$100.00	\$150.00
10 Month Website Spots (Business Card and Link Included) <i>Website has over 20,000 hits!</i>	\$250.00	\$300.00
10 Monthly Newsletter and 10 Month Website Spots	\$300.00 <i>A savings of \$50.00!</i>	\$400.00 <i>A savings of \$50.00!</i>

Please indicate your interest in sponsoring us by responding to the email address below and remit your business card in either PDF or JPEG formats to Tom Morgenthau. Please send payment to the address below made out to "ASHRAE Florida West Coast". Sponsorship fees shall be prorated based on the number of newsletter editions and website months remaining upon the purchasing of your sponsorship plan.

Thank you for considering ASHRAE Florida West Coast Chapter's newsletter and website in your marketing strategy!

[**bhair@hvac.me.com**](mailto:bhair@hvac.me.com)

ASHRAE Florida West Coast Chapter
1340 Satellite Boulevard
Suwanee, GA 30024