

In This Issue:

Presidential Address.....	1
January 14 th Monthly Meeting Flyer.....	2
Riding The Waves.....	3
January 8 th Mentoring Minds Flyer.....	4
Student Activities / Smart Start Program....	5
Research Promotion.....	6
Fareed T. Ossi Birthday.....	7

Upcoming Events:

- January 8th – Mentoring Minds
- January 14th – Monthly Dinner Meeting
- February 28th – Annual Golf Tournament
- March 18th – Monthly Dinner Meeting
- April 4th – Annual Shrimp Boil
- May 20th – Monthly Dinner Meeting

For More Information:

<http://www.ashrae-fwc.org/>

-OR-

Mike Costello

mcostello@cea-engineers.com

813-300-4662

8365 Gunn Highway

Tampa, Florida 33626

From the Desk of the President Philippe Jean, P.E.

Greetings Florida West Coast members and guest and welcome to 2014. 2013 was a great year that ended in a positive way with an excellent presentation by Ross Montgomery on ASHRAE's bEQ program. The presentation was well received by one of our largest lunch meetings in several years.



The generosity shown by our members in the Toys for Tots drive was outstanding. Through your support, we demonstrated that ASHRAE is truly a giving organization with the greatest membership of any society. Thank you to all that were involved for making this a successful event.

January's meeting will be held on January 14th, 2014 at the Columbia restaurant in Ybor. Scott Martin, P.E., LEED AP BD+C will be presenting on equipment wind loading and the Florida Building Code. Mr. Martin is a Principal and Senior Project Manager in the Structural Engineering Services Group at Walter P. Moore in Tampa, FL. Mr. Martin is a graduate of the University of Florida and was the 2013 President of the Florida Structural Engineers Association. He has been a consulting structural engineer for over 15 years, being licensed in Florida, Virginia, and North Carolina, and has been the Structural Engineer-of-Record for over 35 projects in Florida. Mr. Martin's presentation promises to be educational and insightful while dealing with a very difficult topic. A panel discussion with encouraged audience participation will follow Mr. Martin's presentation. I look forward to seeing you all at this meeting.

The Florida West Coast chapter of ASHRAE's annual golf outing at the Eagles Golf Course in Odessa will be held next month on Friday, February 28th. This has been a fun and successful event over the last several years thanks to the support of our members and guests. Please join us this year for a great golfing event.

On a final note, the Florida West Coast chapter tries to structure the monthly meeting topics around subjects that are interesting and beneficial to the audience members. Please help us make our monthly meetings as informative as possible by letting us know any topic that you would like to see as a presentation; your input is very valuable. We have a great chapter with access to great presenters on several different topics.

NEXT ASHRAE FWC MONTHLY MEETING

JANUARY 14, 2014

The Florida Building Code

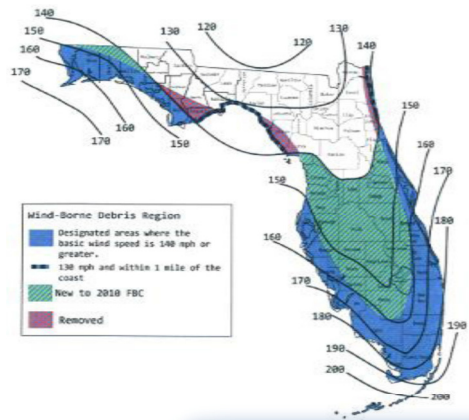
Wind Loads and Equipment

Registration:
5:00 – 6:00 PM

Main Meeting:
6:00 – 8:00 PM

Columbia Restaurant
2117 E. 7th Ave.
Ybor City, FL 33605

**Cost: \$35 thru Paypal
or \$40 day of Event**
(It is still \$40 day of event if you
RSVP but do not pay thru Paypal)



RSVP NOW AT:
<http://www.ashrae-fwc.org/monthly-meetings/>

Joint Meeting with the Bay Area Chapter of the Florida Structural Engineers Association & USGBC

The 2010 Florida Building Code, which was adopted in March of 2012, brought significant changes that we, as professionals, need to understand and comply with. Scott Martin, P.E. with Walter P. Moore will be discussing the Florida Building Code in regards to wind loads and equipment in a way that will leave attendees with an understanding of the code and its implications. A panel discussion, encouraging audience participation, will follow the presentation by Mr. Martin.



Presenter for the Evening:
Scott D. Martin, P.E., LEED AP BD+C
Principal
WALTER P MOORE

Email questions or RSVP at joseph.souza@lge.com
or call (813) 778-7649.



RIDING THE WAVES

On Friday December 20th the Florida West Coast ASHRAE chapter set sails on the open seas of the Port of Tampa for a cruise. Led by the engineering group at the port, this event provided a stronger insight to one of the nation's most diversified ports with cargo, cruise ships and real estate to grow.

The Port of Tampa's longstanding supremacy among Florida ports is based largely on its leadership in handling of bulk and break-bulk cargos, including phosphate, steel and petroleum, as well as in the shipbuilding industry. The Port of Tampa over the past decade has impressively advanced its container-handling capabilities and seen a rapid growth in regional distribution facilities.

Handling more than 34 million tons of cargo in the fiscal year ended Sept. 30, 2011 – nearly 40 percent of all cargo moving in and out of the state of Florida. This embraces virtually every imaginable commodity, including vehicles and oversized project cargos, from all corners of the world. Top trade partners include India, Mexico, Brazil, Trinidad, Canada, Russia, Australia, Japan, Argentina and Turkey. At the same time, the Port of Tampa has emerged among the top eight U.S. cruise ports, smoothly handling nearly 1 million passenger moves a year.

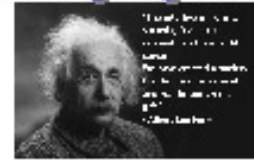


For more information please contact your grassroots chair, Malia Powers, at malia.powers@carrier.utc.com

American Society of Heating, Refrigerating and Air-Conditioning Engineers



Mentoring Minds
Meeting Notice
Wednesday January 8, 2014



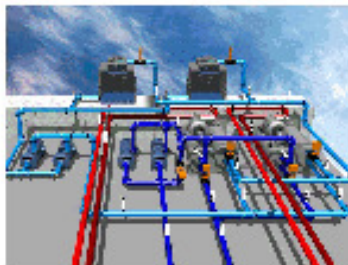
Fundamentals of Chilled Water Plant Design

The West coast Florida Chapter is proud to announce the program series designed to help give back to the engineering community by teaching core fundamentals of our trade. One of ASHRAE's core commitments is as follows:

"We are committed to the advancement of the arts and sciences of HVAC&R for the benefit of society through research, technology development and transfer, and education and training".

This series of programs is designed to help provide a basic understanding of HVAC engineering! Tonight's topic is going to cover the fundamentals of Chilled Water Plant Design! The evening will cover the following:

- **Chilled water Plant Analysis fundamentals**
 - o Understanding the load model
 - o System type Analysis
 - Air Cooled vs. Water cooled
 - Primary/Secondary vs. Variable flow primary
 - **Chiller Scheme Evaluations**
 - o Constant Volume Pumping
 - o Constant Volume By-pass Pumping
 - o Primary/Secondary Pumping
 - o Series Flow Arrangement
 - o Variable Flow Primary Pumping
 - o Thermal Storage
- **Pumping Evaluations**
 - o How to evaluate the pumps
 - o Displacement Ventilation



Mentor for the Evening
Al LaPera
EMP, CxA, LEED™ AP BD+C
TLC Engineering for Architecture

TLC Engineering for
Architecture Office

500 M Westshore Blvd
Tampa, FL 33609

Class Starts: 6:00PM
Cost \$10

Meal choices are as follows:
Pizza, Pizza, Pizza and a drink!



NOTE: We are proud to announce that these programs will now be offering 3 PDH's which are good towards your PE continuing education credit hours. If you want these PDH's the donation is \$50.

Need RSVP to

Philip Jean @ pjean@stanweaver.com

Student Activities

Jamie Szikszay

Fall scholarships were awarded on December 17th, 2013, to four student members by the Florida West Coast Chapter of ASHRAE. The student members—Rajeev Kamal, Timothy Theriault, Matthew Reeves, and Travis Strammer—who received the scholarships demonstrated characteristics that make them an asset to ASHRAE as well as the HVAC industry. The Florida West Coast Chapter is proud to support the individuals that are the future of our industry!



Smart Start Program

Mike Costello

Are you or someone you know a student member of ASHRAE that is close to graduating? ASHRAE's Smart Start Membership Program is for them! This program was developed to decrease the costs of transitioning from a Student Member to Associate Member.

\$20 – First Year Associate Membership

\$50 – Second Year Associate Membership

\$50 – Third Year Associate Membership

Participants in this program still receive all of the benefits of Associate Membership, but at a considerably discounted rate (Current Associate Member dues are \$192 per year). Information can be found at: www.ashrae.org/smartstart.

If you have any questions, please contact me at: 813-300-4662, or at mcostello@cea-engineers.com.



ASHRAE FWC Research and Promotion Donations

Joe Cox

Let me start by personally thanking each and every investor both individual and corporate, it is because of you that the Florida West Coast Chapter continues to set the standard and lead the way, not only in Region XII but on a national level. As of December 31, 2013, the Florida West Coast Chapter has collected \$ 9,107.00, please be sure to recognize those investors below.

Please make your contributions early this year either by check 'Payable to ASHRAE RP' and turn them in to me or if you prefer you can make online donations at:

<https://xp20.ashrae.org/secure/researchpromotion/rp.html>

If you make a donation online, please forward me a copy of the emailed invoice so I can ensure that proper credit is given at jcox@sladerossinc.com.

ASHRAE Research Investors 2013-2014			
Individual Investors		Company Investors	
HR = Honor Roll participants \$100 min		HR = Honor Roll participants \$150 min	
Joe Souza	\$326	Original Solutions	\$400
Isaac Crimm	\$113	Air Mechanical & Service Corporation	\$1,000
Joe Cox	\$101	Advanced Automation Systems	\$250
Jaime Szikszay	\$101		
Philippe Jean	\$101		
Leon Boe	\$100		
Jason Proctor	\$101		
Mike Costello	\$101		
Dan Rogers	\$1,750		
Jennifer Isenbeck	\$105		
Ted Hansen	\$110		
Ross Montgomery	\$100		
Shawn Jeffrey	\$135		
Jack Eunson	\$100		

\$9,107

Updated 1/3/14	Current Campaign Total - \$9,107.00 Campaign Goal - \$22,000
	41.4% of Goal Money Required for Goal - \$12,893.00

Fareed T. Ossi Birthday

Mike Costello

During our November Monthly Meeting we were proud to celebrate Fareed Ossi's 80th birthday. Mr. Ossi has been a long-time ASHRAE FWC member; President in 1970-71.



...and he sang Def Leopard karaoke...just kidding!